



INSTALLATION CHECK

Connect the trailer to the hitch ball. Check clearance. You should have about 6" clearance between bottom of trailer overhang and top of bed sides. Verify clearance between lower front of trailer and corner of bed or bumper and between the upper front corner of the trailer and rear of cab.

MAINTENANCE

1. Keep hitch ball greased regularly. Use wheel bearing grease to prevent wear and rust.
2. Keep hitch assembly free of dirt and other foreign matter.
3. Check tightness on all nuts and bolts before each use. Also check for excessive wear.
4. Check for ball wear before each use. Do not tow trailer with worn or damaged parts.

**Thank You For Patronizing an American Company.
See us at a local dealer for all of your
hitch and trailer supplies.**

**MADE
IN THE
U.S.A.** 

FRAME SUPPORT

An alternative mounting method is the H-Frame support which consist of a steel frame and frame brackets. The steel bar for the framework should be at least 1/2" thick and 2" wide. The frame brackets should be 3/8" x 2".

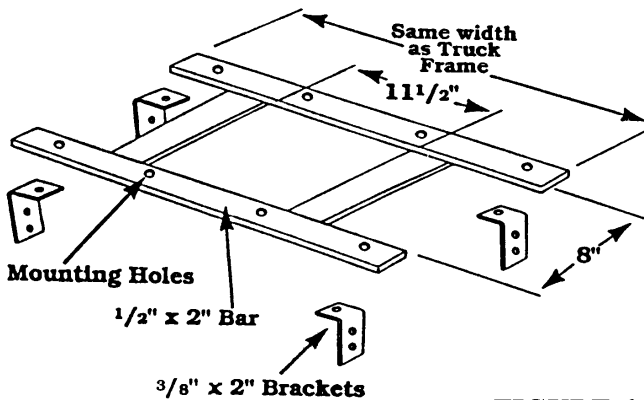
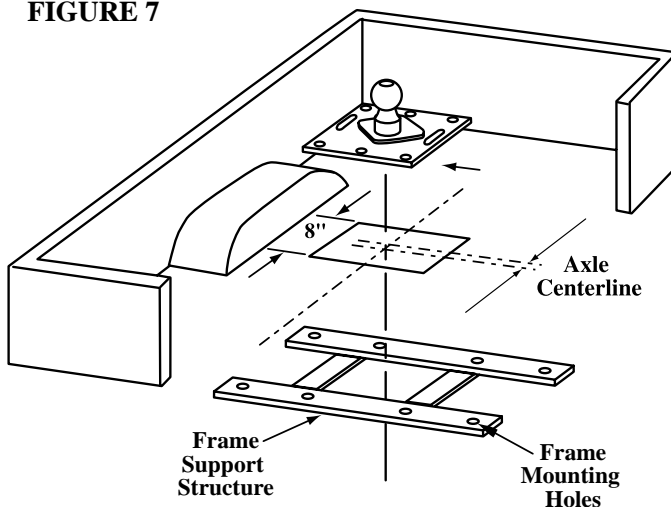


FIGURE 6

1. Align fold-down hitch ball assembly in bed of truck centered with cut-out in floor of bed.
2. Using the hitch ball assembly as a template, mark and drill 11/16" holes (Figure 7)

FIGURE 7



3. Place frame support structure underneath bed of truck and above truck frame. Align with cutout in bed of truck. Use clamps to hold structure in place.

4. Using holes previously drilled in truck bed as a guide, drill six holes in structure.
5. Using the SAE grade 5, 5/8" carriage bolts, nuts and lockwashers, attach the hitch ball assembly and the frame structure support to the truck bed. Shims should be used to accommodate corrugation in pickup bed.

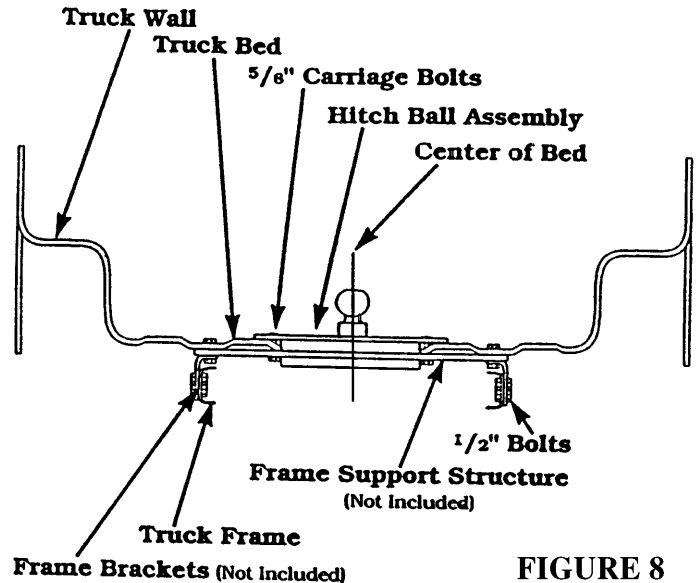


FIGURE 8

6. Tighten to 115 lb-ft. torque.
7. Fabricate four 3/8" x 2" steel frame brackets to fit your particular truck.
8. Attach frame brackets to frame support structure and truck frame using SAE grade 5, 5/8" hex bolts, nuts and lockwashers.
9. Tighten to 115 lb-ft. torque.

WARNING: Do not weld brackets to frame, welding will not provide the strength needed for towing.

PARTS LIST:

- (1) C-10 Flate Plate Hitchball
- (6) 5/8-11x 1 3/4" carriage bolts
- (6) 5/8-11 flange nuts
- (1) U-bolt kit

BED PLATE SUPPORT

The installer must make his/her own support consisting of a hot rolled steel plate, (3/8" x 26" x 40"), Angle braces (2" x 2") and frame brackets (3/8" x 2"). (Figure 3)

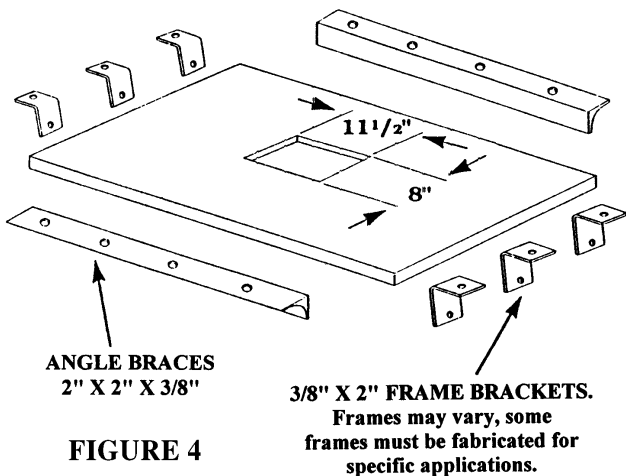


FIGURE 4

1. Center bed plate in the pickup bed. (Figure 4)
2. Center cut-out in bed with cut-out in plate.

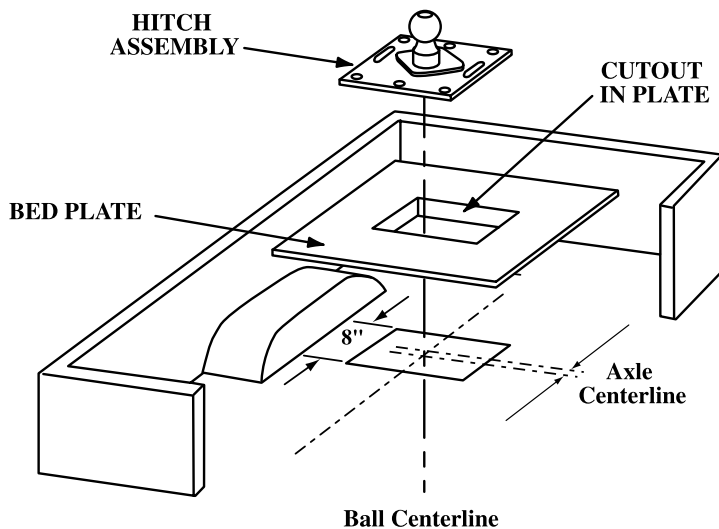


FIGURE 4

3. Place assembly in hole, plate and bed.
4. Using holes in base of fold-down hitch as a template, mark and drill 11/16" holes through the bed and plate to secure hitch to bed plate.

5. Use 6 SAE grade 5, 5/8" carriage bolts and flange nuts to bolt the hitch ball assembly into the bed and through the plate. Shims should be used to accommodate corrugation in pickup bed.
6. Tighten nuts to 115 lb-ft. torque.
7. Attach angle braces to the underneath side of bed so bolts go through both the bed and the plate. If necessary, move angle braces forward or back to clear cross members.
8. Drill 17/32" holes in front and rear of plate. (Figure 5)

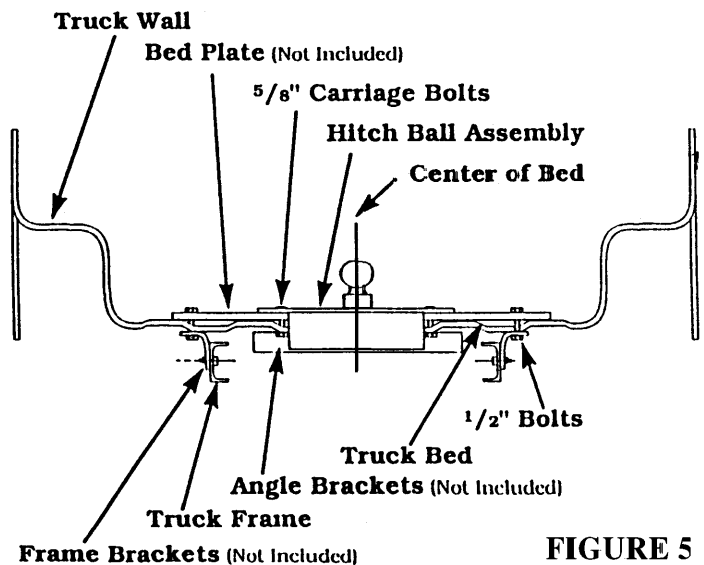


FIGURE 5

9. Use 6 SAE grade 5, 1/2" bolts, nuts and lockwashers to attach angle braces.
10. Fabricate 6 frame brackets 2" x 3/8".
11. Place brackets along each side of truck frame taking care to avoid cross members or other parts. Drill 17/32" holes through bed and plate. (Figure 5)
12. Attach brackets to bed and plate with SAE grade 5, 1/2" bolts, nuts and lockwashers.
13. Drill 17/32" holes through lower angles of brackets and through the truck frame. (Figure 5) Holes must be in center of frame.
14. Bolt brackets to the frame with SAE grade 5, 1/2" bolts, nuts and lockwashers (Not supplied).

CAUTION: Do not weld brackets to frame.

15. Tighten all bolts to 75 lb-ft. torque.